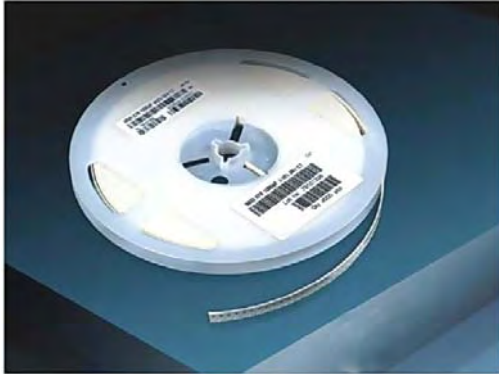
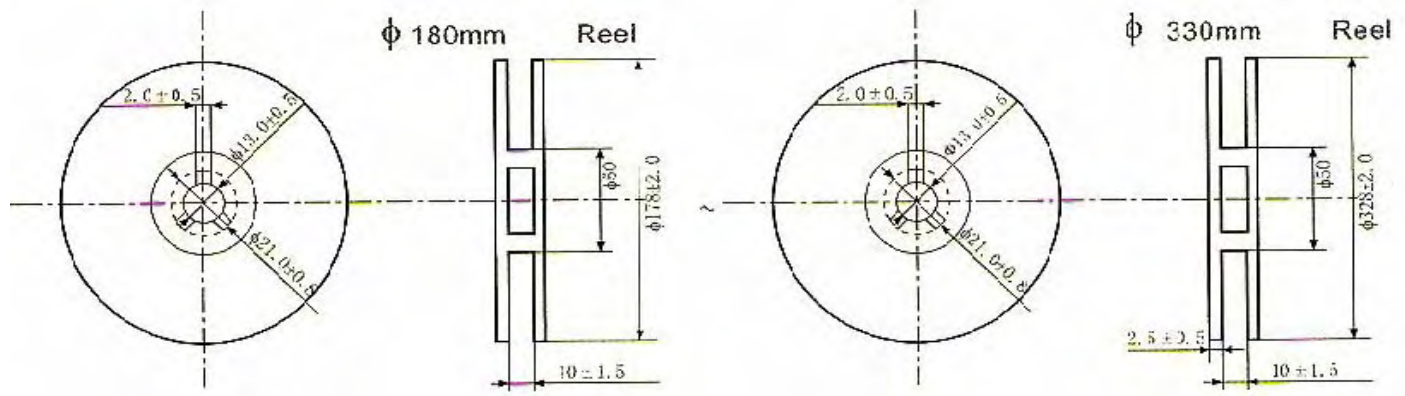


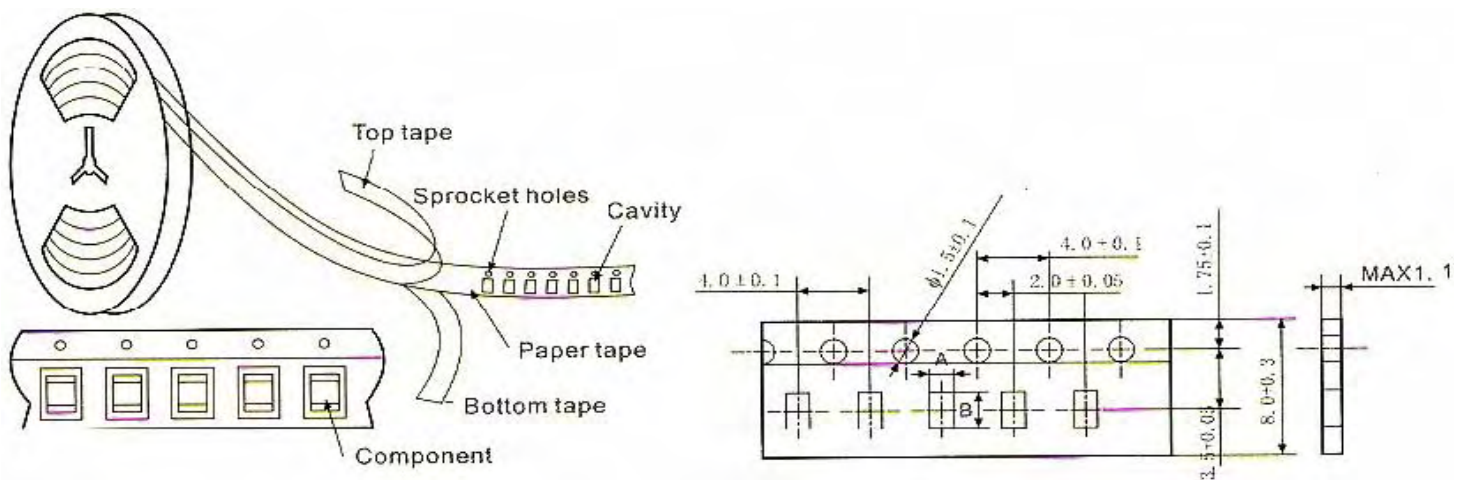
Packaging



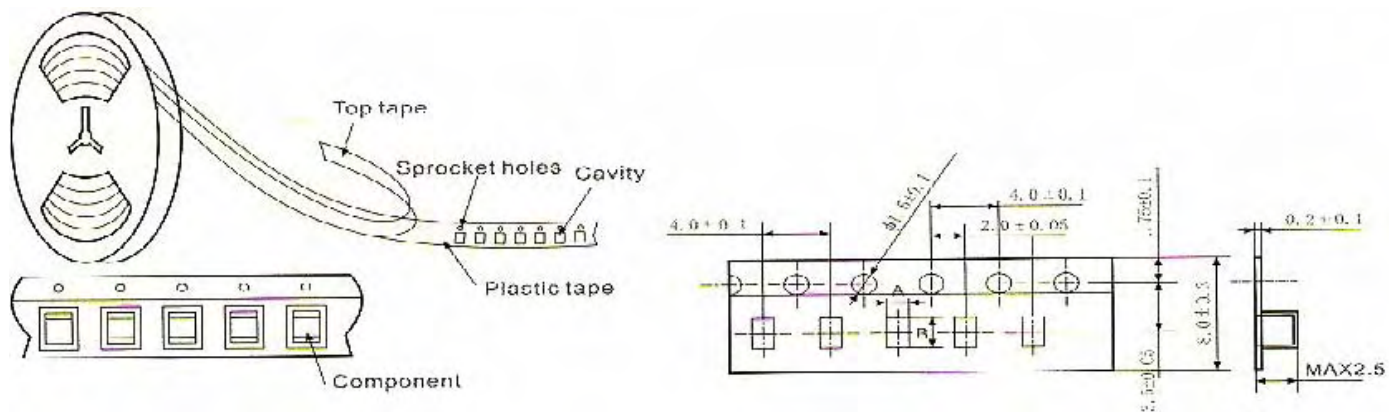
Tape and Reel Packaging



Paper tape



Embossed Tape



Packaging

Type	A	B
0402	0.65 ± 0.1	1.15 ± 0.1
0603	1.05 ± 0.1	1.85 ± 0.1
0805(T < 1.0mm)	1.55 ± 0.15	2.3 ± 0.15
1206(T < 1.0mm)	2.0 ± 0.2	3.6 ± 0.2
0805(T < 1.25mm)	1.45 ± 0.2	2.25 ± 0.2
1206(T < 1.0mm)	1.9 ± 0.2	3.5 ± 0.2

Taping Method

Tapes for the capacitors are wound clockwise.

The sprocket holes are to the right as the tape is pulled towards the user.

The top tape and the base tape are not attached at the end for a minimum of 5 pitches.

Part of the leader and part of the of the empty tape shall be attached to the end of the tape as following

Illustration.

Number of missing capacitor is less than 0.1% of the total number quoted per reel or lpc, whichever is greater and are not continuous.

The top tape and bottom tape shall not protrude beyond the edges of the tape and bottom tape shall not cover sprocket below.

Cumulative tolerance of sprocket holes, 10 pitches: $\pm 0.3\text{mm}$.

Peeling off force: 0.1 to 0.6N in direction shown down.

